



ENGLISH

PRICE LIST XE SERIES

VALID FROM MAY 2022





Side length	4,0 m	Covered area	9,5 m²
Entrance height	2,1 m	Weight	10,0 kg
Total height	2,8 m	Weight Wall	1,5 kg
Tube diameter	0,25 m	Setup time with electric pump	8-10 min

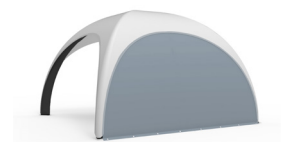
TENT XE 4 - STANDARD COLORS - UNPRINTED 36 475 Kč

Tubes black, zipper rain cover transparent, included with delivery: hand pump and repair-kit.

OPTIONAL FEATURES WITH ADDITIONAL CHARGE:

Foil Printing	see below
Digital printing Roof	12 525 Kč

ELEMENTS



UNIVERSAL WALL / DOUBLE SIDED

Standard Color	5 300 Kč / N/A
Foil Printing	see below
Digital Printing	11 225 Kč / 19 200 Kč

FOIL PRINTING FOR ROOF AND WALL ELEMENTS

up to 0,75 m² / element	3 575 Kč
up to 1,50 m² / element	7 150 Kč
up to 2,25 m² / element	10 700 Kč
up to 3,00 m² / element	14 275 Kč
up to 3,75 m² / element	17 850 Kč

*double-sided wall printing with foil printing on request

PACKAGING / TRANSPORT

Easy Bag recom. for the XE 4 - XE 6	1 pc.	3 025 Kč
Transport Bag L recom. for the XE 4 / 243 liters	1 pc.	2 550 Kč
Accessorie Bag L for 2 wall elements of the XE 4	1 pc.	325 Kč
Accessorie Bag XL for 4 wall elements of the XE 4	1 pc.	400 Kč
Transport Handtruck load capacity up to 120 kg / open 108 x 50 x 52 cm	1 pc.	2450 Kč
Transport Box incl. cover recom. for the XE 4-5 incl. accessories / 250 liters / L80 x B60 x H93 cm	1 pc.	10 925 Kč
Transport Box recom. for XE 4-6 w/o accessories / 172 liters / L80 x B60 x H44 cm	1 pc.	2 150 Kč
Transport Box recom. for accessories / 88 liters / L60 x B40 x H44 cm	1 pc.	875 Kč

ACCESSORIES

Electric Pump - OV10	1 pc.	3 550 Kč
Electric Pump - Bravo 230V/2000	1 pc.	8 150 Kč
Wall Ballast 1 pc. per Wall	1 pc.	975 Kč
Anchoring Set 16x Tent Pegs L300 mm / 4 x L500 mm / 4x Speed Cinch	1 set	2 125 Kč
Tube Ballast	up to 15 km/h	4 pcs. 3 975 Kč
	up to 30 km/h	8 pcs. 6 750 Kč
Water Ballast Barrel	up to 30 km/h	4 pcs. 20 175 Kč
+ digital printed Cover	1 pc.	2 250 Kč
Protection Foil for protection against dirt during setup and takedown	1 pc.	1 575 Kč



Side length	5,0m	Covered area	15,0 m ²
Entrance height	2,4 m	Weight	14,5 kg
Total height	3,3 m	Weight Wall	2,0 kg
Tube diameter	0,31 m	Setup time with electric pump	10–13 min

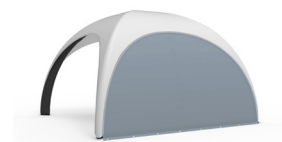
TENT XE 5 – STANDARD COLORS – UNPRINTED 50 675 Kč

Tubes black, zipper rain cover transparent, included with delivery: hand pump and repair-kit.

OPTIONAL FEATURES WITH ADDITIONAL CHARGE:

Foil Printing	see below
Digital printing Roof	18 150 Kč

ELEMENTS



UNIVERSAL WALL / DOUBLE SIDED

Standard Color	6 475 Kč / N/A
Foil Printing	see below
Digital Printing	14 625 Kč / 27 625 Kč

FOIL PRINTING FOR ROOF AND WALL ELEMENTS

up to 0,75 m ² / element	3 575 Kč
up to 1,50 m ² / element	7 150 Kč
up to 2,25 m ² / element	10 700 Kč
up to 3,00 m ² / element	14 275 Kč
up to 3,75 m ² / element	17 850 Kč

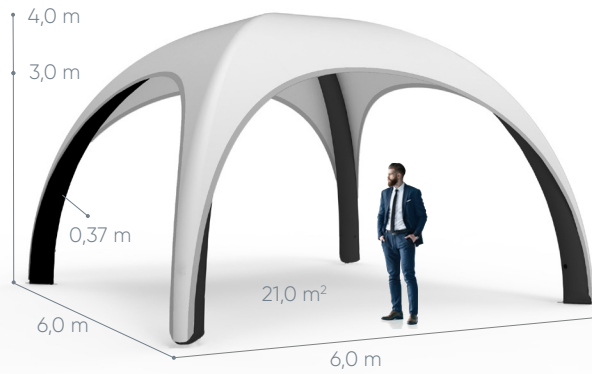
*double-sided wall printing with foil printing on request

PACKAGING / TRANSPORT

Easy Bag recom. for the XE 4 – XE 6	1 pc.	3 025 Kč
Transport Bag XL recom. for the XE 5–6 / 450 liters	1 pc.	2 825 Kč
Accessorie Bag L for 2 wall elements of the XE 4	1 pc.	325 Kč
Accessorie Bag XL for 4 wall elements of the XE 4	1 pc.	400 Kč
Transport Handtruck load capacity up to 120 kg / open 108 x 50 x 52 cm	1 pc.	2450 Kč
Transport Box incl. cover recom. for the XE 4–5 incl. accessories / 250 liters / L80 x B60 x H93 cm	1 pc.	10 925 Kč
Transport Box recom. for XE 4–6 w/o accessories / 172 liters / L80 x B60 x H44 cm	1 pc.	2 150 Kč
Transport Box recom. for accessories / 88 liters / L60 x B40 x H44 cm	1 pc.	875 Kč

ACCESSORIES

Electric Pump – OV10	1 pc.	3 550 Kč
Electric Pump – Bravo 230V/2000	1 pc.	8 150 Kč
Wall Ballast 1–2 pc. per Wall	1 pc.	975 Kč
Anchoring Set 16x Tent Pegs L300 mm / 8 x L500 mm / 4x Speed Cinch	1 set	2 625 Kč
Tube Ballast	up to 15 km/h	4 pcs. 3 975 Kč
	up to 30 km/h	8 pcs. 6 750 Kč
Water Ballast Barrel	up to 30 km/h	4 pcs. 20 175 Kč
+ digital printed Cover	1 pc.	2 250 Kč
Protection Foil for protection against dirt during setup and takedown	1 pc.	2 525 Kč



Side length	6,0m	Covered area	21,0 m ²
Entrance height	3,0 m	Weight	18,8 kg
Total height	4,0 m	Weight Wall	3,0 kg
Tube diameter	0,37 m	Setup time with electric pump	12-15 min

TENT XE 6 - STANDARD COLORS - UNPRINTED 66 800 Kč

Tubes black, zipper rain cover transparent, included with delivery: hand pump and repair-kit.

OPTIONAL FEATURES WITH ADDITIONAL CHARGE:

Foil Printing	see below
Digital printing Roof	21 825 Kč

ELEMENTS



UNIVERSAL WALL / DOUBLE SIDED

Standard Color	7 925 Kč / N/A
Foil Printing	see below
Digital Printing	20 750 Kč / 38 750 Kč

FOIL PRINTING FOR ROOF AND WALL ELEMENTS

up to 0,75 m ² / element	3 575 Kč
up to 1,50 m ² / element	7 150 Kč
up to 2,25 m ² / element	10 700 Kč
up to 3,00 m ² / element	14 275 Kč
up to 3,75 m ² / element	17 850 Kč

*double-sided wall printing with foil printing on request

PACKAGING / TRANSPORT

Easy Bag recom. for the XE 4 - XE 6	1 pc.	3 025 Kč
Transport Bag XL recom. for the XE 5-6 / 450 liters	1 pc.	2 825 Kč
Accessorie Bag L for 2 wall elements of the XE 4	1 pc.	325 Kč
Accessorie Bag XL for 4 wall elements of the XE 4	1 pc.	400 Kč
Transport Handtruck load capacity up to 120 kg / open 108 x 50 x 52 cm	1 pc.	2450 Kč
Transport Box incl. cover recom. for the XE 6 w/o accessories / 250 liters / L80 x B60 x H93 cm	1 pc.	10 925 Kč
Transport Box recom. for XE 4-6 w/o accessories / 172 liters / L80 x B60 x H44 cm	1 pc.	2 150 Kč
Transport Box recom. for accessories / 88 liters / L60 x B40 x H44 cm	1 pc.	875 Kč


ACCESSORIES

Electric Pump - OV10	1 pc.	3 550 Kč
Electric Pump - Bravo 230V/2000	1 pc.	8 150 Kč
Wall Ballast 2 pc. per Wall	1 pc.	975 Kč
Anchoring Set 16x Tent Pegs L300 mm / 8 x L500 mm / 4x Speed Cinch	1 set	2 625 Kč
Tube Ballast	up to 30 km/h	8 pcs. 6 750 Kč
Water Ballast Barrel	up to 30 km/h	4 pcs. 20 175 Kč
+ digital printed Cover	1 pc.	2 250 Kč
Protection Foil for protection against dirt during setup and takedown	1 pc.	3 325 Kč

MORE INFORMATION

1. ROOF AND ELEMENTS

1.1 STANDARD COLORS - UNPRINTED

Ready to ship: in 2 weeks
Material: NESTRA – a high quality, dyed polyester fabric with a PU coating
Colors: 

1.2 FOIL PRINTING

Ready to ship: in 2 weeks
Printing: partial thermal-transfer foil printing of Designs in CMYK.

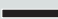
Through this print method, the design is first printed onto a special foil. The foil is then placed on the desired product surface and put under a thermal press, which bonds the materials together

1.3 DIGITAL PRINTING

Ready to ship: in 3 weeks
Material: LOTUS – a high-quality, printable polyester fabric with a PU coating
Printing: dye-sublimation printing of fullsurface designs, with images and art in CMYK.
Colors: 

Through this high-quality print method, the design is first mirrored and applied to a coated, heat-resistant transfer paper. Then, using high temperature and pressure, the ink becomes gaseous, and enters and becomes embedded in the fibers of the fabric. When printed, light shining through the fabric will cause the design from the front to appear as a light mirror image on the reverse side. Overall, a brilliant color result.

2. TUBES

Printing: not possible
Material: DACRON – a special heavy-duty fabric with a PU coating
Colors: 

STANDARD COLOR CODES - ROOF / ELEMENTS

BLACK	WHITE	GRAY 423 C	RED 200 C	BLUE 2728 C
-------	-------	------------	-----------	-------------

NOTE ON PRINTING:

All prices are net prices in Euro (€), and are quoted ex warehouse of X GLOO GmbH & Co. KG and/or MATOTEX SIA and do not include delivery costs.

Prices and contents are subject to change. This content corresponds to the knowledge available at the time of printing. X GLOO GmbH & Co. KG assumes no liability for correctness and completeness. All orders are subject to the terms and conditions of X GLOO GmbH & Co. KG.

xgloo.com/agb

NOTE ON PRINTING:

Both printing components can be combined. However, color differences between printed and dyed material is likely and will not be recognized as grounds for complaints or returns.

LEGEND



UV RESISTANT

High UV resistance, with a sun protection factor above 50 and light fastness level 5-6 (according to DIN EN ISO 105-B02).



WASSER RESISTANT

A watertight shelter, through the use of impermeable PU material, sealed seams and built-in zipper gutters.



FLAME RETARDANT

X GLOO® tents are classified as flame retardant according to DIN 4102-1 (German standard) and CPAI 84 (international standard).



WINDSTABIL

A wind-tunnel tested design, which has been proven to withstand winds of up to 60 km/h (Beaufort force 7), when properly secured and anchored.



BEDRUCKBAR

Whether you want a single-color tent with a printed logo, or have a full-surface, photo-realistic design in mind – you have full design flexibility of your.

N/A

not available